

The background is a deep blue gradient with stylized, layered hills in various shades of blue. A bright yellow circle, representing the sun, is positioned in the upper center. Another smaller yellow circle is partially visible behind the text.

EMILY WEINER

The background is a deep blue gradient with stylized, layered hills in various shades of blue. A pinkish-orange circle, representing the sun, is positioned in the lower center.

HUXLEY—PARLOUR

EMILY WEINER

B. UNITED STATES,
1981

Emily Weiner's practice examines art historical imagery and repeated motifs which she reimagines through new perspectives, in particular investigated these symbols through a feminist and Jungian lens. Weiner seeks to investigate how reconfiguring these symbols can generate new understandings across generations and how imagery and its attached meaning can evolve.



Freefall, oil on linen in painted wood frame, 2024

Weiner received a BA from Barnard College, Columbia University before graduating with an MFA from the School of Visual Arts, New York. She has completed residencies at The Cooper Union, New York, as well as The Banff Center, Canada. In 2022 Weiner was the recipient of The Hopper Prize, as well as the Current Art Fund from the Andy Warhol Foundation for Visual Arts & Tri-Star Arts (2021). Her work has been exhibited in the United States, Italy, Norway, China, and Canada, and is held in the permanent collections of the Pennsylvania Academy of Fine Arts, Philadelphia and Kunsthall Grenland, Porsgrunn, Norway.

Weiner lives and works in Nashville.



Providence (Apparition), oil on shaped MDF in wood frame, 2024





Origins, 2024
Oil on linen in painted wood frame



EMILY WEINER

B. 1981, UNITED STATES

Lives and works in Nashville, TN

EDUCATION

School of Visual Arts, New York

MFA Fine Art, 2011

Barnard College, Columbia University

BA Painting, 2003

SELECTED EXHIBITIONS

- 2025 Elastic Concept, Huxley-Parlour, London (solo, upcoming)
- 2024 Passages, König Galerie, Mexico City, Mexico
Time and Tide, König Galerie, Berlin
Never odd or even, Red Arrow Gallery, Nashville, TN, US
The Armory Show, Miles McEnery Gallery, New York, NY
Ode to a Beautiful Nude, Wilder Gallery, London, UK
I look to the moon like a fellow traveler, LAMB Gallery, London, UK
- 2023 I took my lyre and said, Entrée Bergen, Norway
Ambiguous Figures, Pentimenti Gallery, Philadelphia, PA
NOW, Huxley Parlour, London, UK
And the night flowers open, Andrea Festa Fine Art, Rome, Italy
David Zwirner Platform, SE Cooper Contemporary, Portland, OR
- 2022 Fortune Tellers, curated by Randi Grov Berger, Kunsthall Grenland, Porsgrunn, Norway
Art 021 Shanghai, Wespace, Shanghai, China
Mundus Inversus (artist and curator), Red Arrow Gallery, Nashville TN
- 2021 Phases, Whitespace, Atlanta, GA
- 2020 Believing You, Visual Arts Gallery, New York, NY
Healing Feeling, Push Projects & Dominique Gallery, Los Angeles, CA
Fable, David Lusk Gallery, Nashville TN
All Dressed Up With Nowhere to Go, Steven Zevitas Gallery, Boston, MA
- 2019 Surreality, Hesse Flatow, New York, NY



AWARDS AND RESIDENCIES

- 2023 Joan Mitchell Fellowship (Nominee)
- 2022 The Hopper Prize
- 2021 Tri-Star Arts Current Art Fund Recipient, Tri-Star Arts & The Andy Warhol Foundation for Visual Arts
- 2017 Pratt Faculty Development Fund Grant Awardee
- 2015 Visiting Artist/Scholar, American Academy in Rome, Italy
- 2014 Cooper Union Artist-Teacher Residency, New York, NY
- 2012 Artist Residency, The Banff Centre, Alberta, Canada
- 2011 Artist Residency, Camac Centre d'Art, Marnay-sur-Seine, France

PUBLIC COLLECTIONS

- The Pennsylvania Academy of Fine Arts, Philadelphia, PN, US
- Kunsthall Grenland, Porsgrunn, Norway

FEATURED PRESS

THE NEW YORK TIMES STYLE MAGAZINE

- The T List: Emily Weiner's Symbolic Paintings, On View in Nashville and Mexico City
- January 2024

A WOMAN'S THING

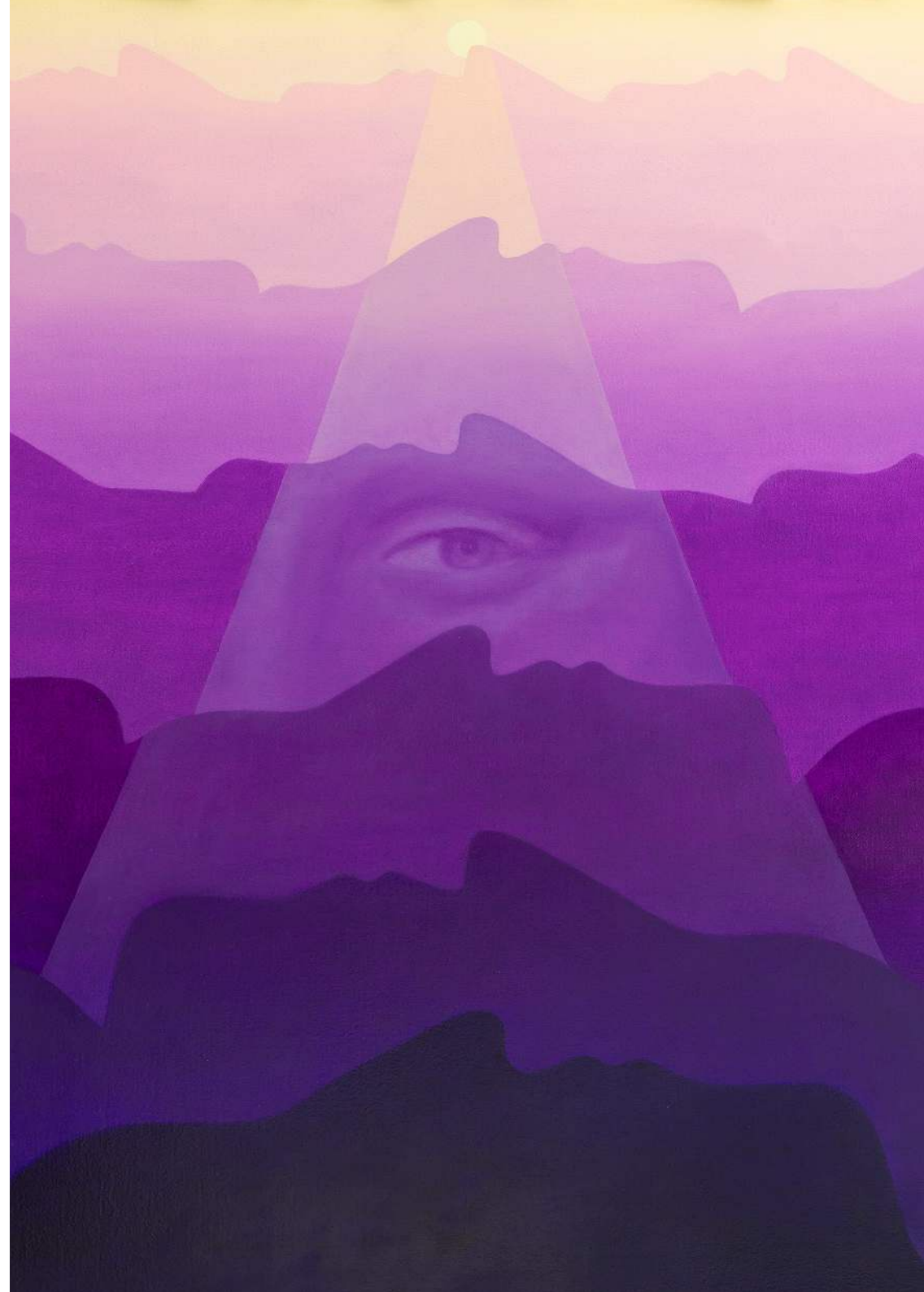
- Painter Emily Weiner: Reframing Symbolic Images through a Feminist Lens
- June 2023

ARTFORUM

- Must See: Mundus Inversus at Red Arrow Gallery
- May 2022

NEW AMERICAN PAINTING

- Editor's Selection
- 2020



3–5 Swallow Street, London W1B 4DE
45 Maddox Street, London W1S 2PE

+44 [0]20 7434 4319
gallery@huxleyparlour.com
www.huxleyparlour.com

HUXLEY – PARLOUR