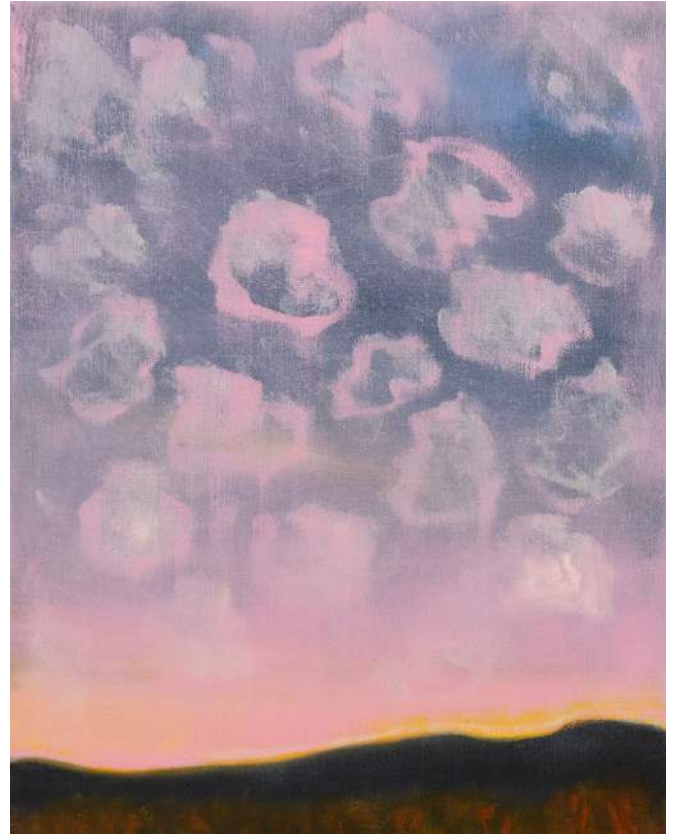


Kathryn Lynch:
Weather

06 March - 18 April 2026



Pink Clouds, 2025

Huxley-Parlour are pleased to present *Weather*, a new body of work by American artist Kathryn Lynch. This suite of works was developed following her move from Brooklyn to upstate New York, and marks a shift from the urban landscape towards a sustained engagement with the natural world. The works, painted between 2024 and 2025, maintain her long-standing interest in perception, atmospheric flux, and the passage of time.

Lynch's paintings examine the structure of place through acts of prolonged observation. Her approach draws on distinct traditions of American landscape painting, linking the material restraint of Maine traditions with the contemplative atmospheres associated with the Transcendental Painting Group of the Western United States. Softly layered brushwork compresses atmosphere and surface allowing familiar forms to slip into spatial fields shaped by tonal contrast. Lynch's paintings resist fixed location, and rather than depicting sites, her work traces conditions - of light and distance - and move freely between recognition and dissolution.

Lynch approaches painting as an open-ended process, one that is gestative and accretive. Speaking about her work, the artist states 'I rely heavily on instinct - my paintings are guttural'. The title *Weather* reflects this approach: weather functions here as a register of change, pressure, and duration - an external force that parallels

the internal, arrhythmic states brought into the act of painting. Light operates as both a physical presence and perceptual guide. The paintings resist narrative, operating instead through memory, perception and temporality. The paintings propose landscape not as site, but as lived condition - one that remains experiential and shared.

Born in 1961, Kathryn Lynch, received her MFA from the University of Pennsylvania in 1990. She has participated in several residency programmes including, the Colstoun House Residency in 2025, the Skowhegan Alumni Residency, the Edward Albee Foundation Residency in 2021, Foundation Valparaiso Residency in 2018, and the Marie Walsh Sharpe Foundation in 1995. She was awarded the NYSCA/NYFA Artist Fellow in Painting in 2018 and received the 1989 Fellowship Award from the Vermont Studio Center through the University of Pennsylvania. Lynch's work has been exhibited globally in over 20 solo shows and upwards of 30 group exhibitions in New York, St. Petersburg, Boston, Los Angeles, and Miami as well as the Maine Biennial in Rockland, Maine in 2025. Her work can be found in a number of collections, such as Fort Wayne Museum of Art, Indiana, University of California Berkeley Art Museum, California, Millenium Art Collection, New York, Wellington Art Collection, UK, and Microsoft, Washington. Lynch lives and works in Catskill, New York.

Kathryn Lynch: Weather
06 March - 18 April 2026

Opening Reception,
Thursday 05 March, 6–8pm

HUXLEY-PARLOUR
3–5 Swallow Street, London W1B 4DE

More information can be found online at www.huxleyparlour.com